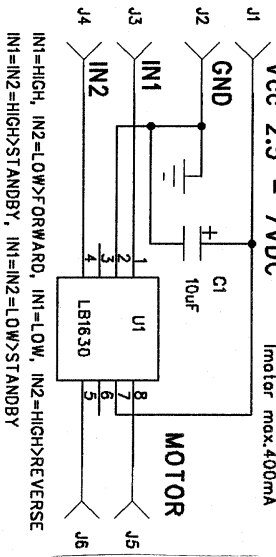


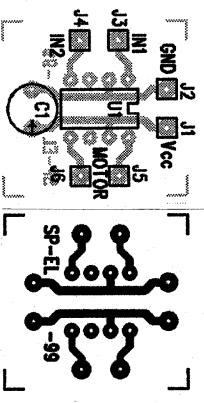
DC-MOOTTORIN OHJAIN

Vcc 2.5 - 7VDC

Imotor max.400mA



IN1=HIGH, IN2=LOW>FORWARD, IN1=LOW, IN2=HIGH>REVERSE
 IN1=IN2=HIGH>STANDBY, IN1=IN2=LOW>STANDBY



MOTORDRIVER 2.5-7VDC

PIIRTI. SPn | TARK. SPn -99
 SUUNN. SPn | PWM

SP-ELEKTRONIIKKA KY